

Comfort Line

Saturn β with Beringer LRV-1

ELEVATOR



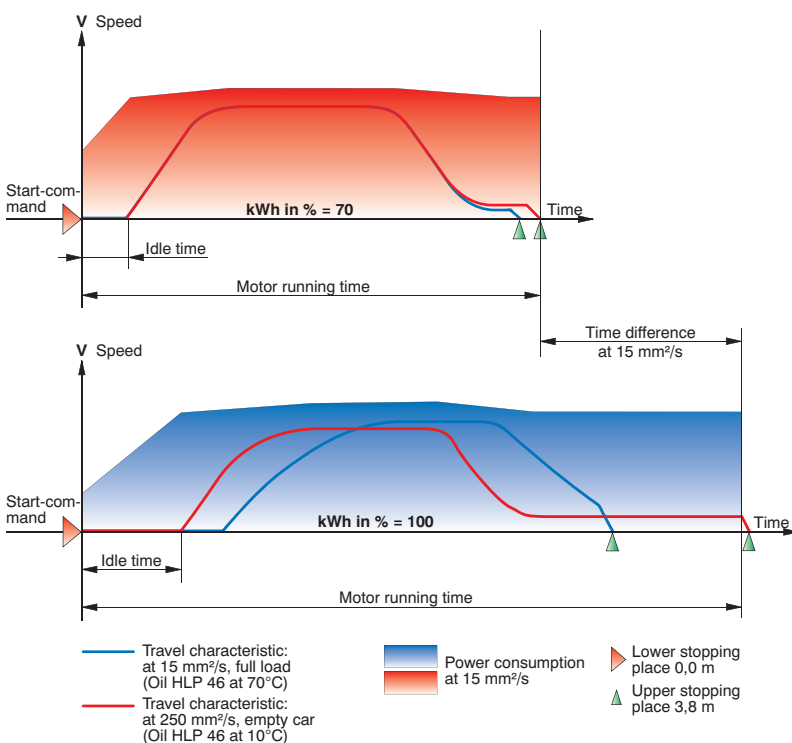
Beringer LRV-1

The electronically controlled Lift Valve

Advantages

- wide range of operating temperature
- reduction of power loss
- reduced energy costs
- total travel time reduced due to short levelling distances
- down speed can be increased up to 50% without extra costs or loss of comfort
- insensitive to changes in pressure and temperature
- no cooling or heating necessary in many cases
- excellent travel comfort

Travelling characteristic



Closed loop control (LRV-1)

Characteristics at temperature differences

- Idle time short and **constant**
- Acceleration **constant**
- Travel speed **constant**
- Deceleration **constant**
- Levelling speed **constant**
- Travelling time **constant**
- Power consumption **constant**
- Power loss **low**

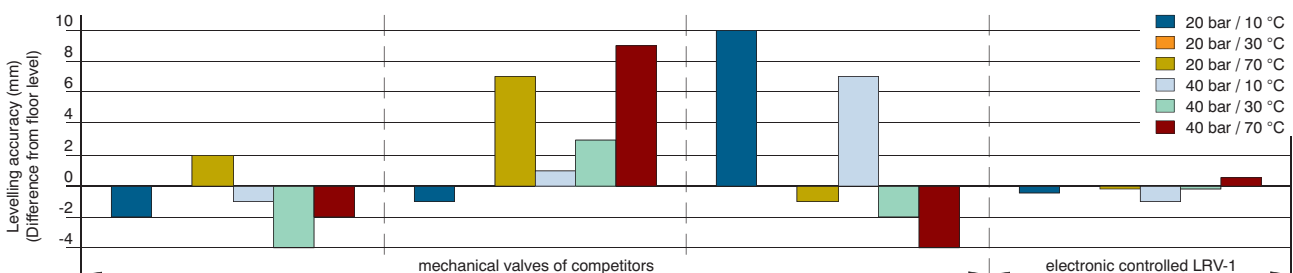
Open loop control (mechanical)

Characteristics at temperature differences

- Idle time **variable**
- Acceleration **variable**
- Travel speed **variable**
- Deceleration **variable**
- Levelling speed **variable**
- Travelling time **variable**
- Power consumption **variable**
- Power loss **high**

Levelling accuracy

(Based on 20 bar / 30 °C)



Delta Controller DELCON

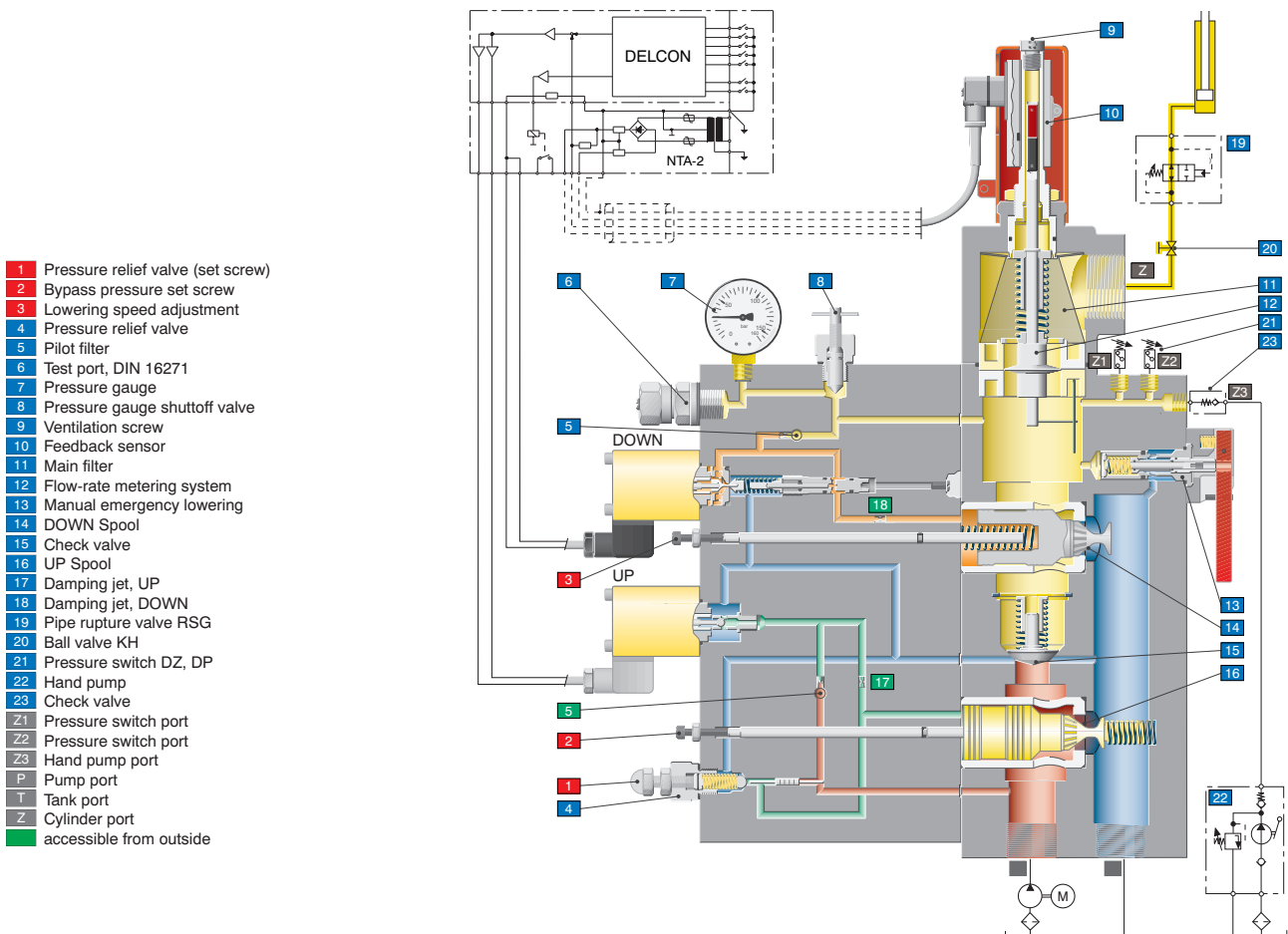
Digital Electronic Card for Beringer Lift Control Valves LRV, LRV-A, LRV-1 and VF-LRV



- compatible with analog cards ELRV-A / ELRV-1
- improved travel characteristics
- display of travel curves on PC
- demand/feedback value control (SIU1) and speed control in door zone (SIU4) simultaneously possible
- fault logger
- adjustments by means of a miniterminal at front plate
- options for simplified and comfortable setting with Handterminal HT or Software Windelta32 (CD)



Functional diagram LRV-1

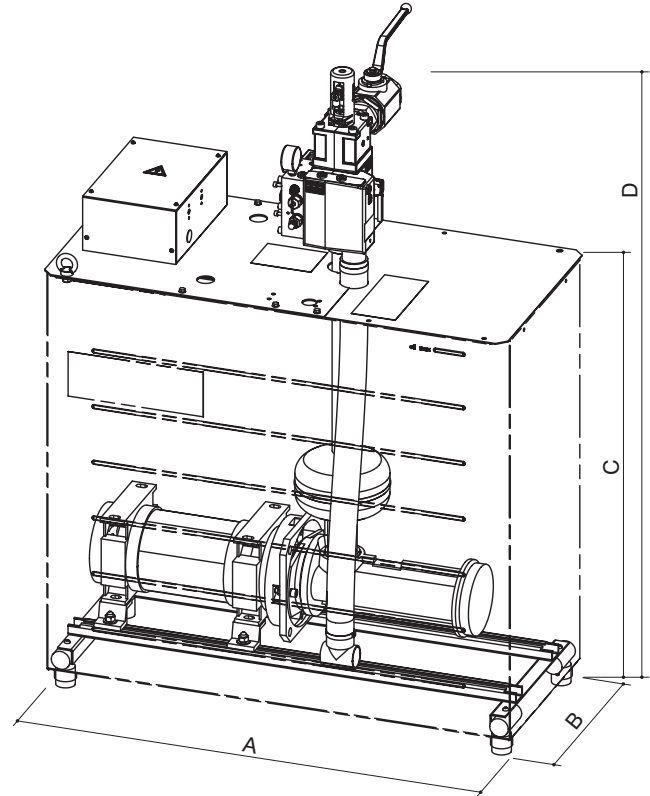


Dimensions and oil flow

Valve	Flow [l/min.]			Dyn. pressure [bar] max.	Viscosity [cSt]		Temperature [°C] max.
	min.	nom.	max.		min.	max.	
LRV 175-1	15	175	250	80	20	500	70
LRV 350-1	251	350	500	80	20	500	70
LRV 700-1	401	700	1000	67	20	500	70

Advantages

- standardized range
- optimized filling volume
- reliable technology with electronically controlled Lift Valve Beringer LRV-1
- minimum space required
- best heat radiation
- reduced noise level
- easy service and maintenance
- operating range from Standard Elevator up to Heavy Goods Lift



Technical data

Tank type	max. oil volume [l]	max. usable oil volume [l]	LRV Typ	A mm	B mm	C mm	D mm	Motor power		Pump type l/min
								50 Hz	kW	
UDA 150	154	88	175-1	870	304	722	1132	3-20		20-240
UDA 230	228	146	175-1 350-1	870	354	885	1340 1370	3-24		20-240
UD 350	330	200	175-1 350-1	1004	480	945	1400 1430	3-33		20-370
UD 500	530	340	175-1 350-1 700-1	1184	550	1115	1570 1600 1700	3-47		20-800
UC 750	720	540	175-1 350-1 700-1	1472	760	1090	1550 1580 1680	3-77		20-800
UC 1000	1045	850	350-1 700-1	1572	820	1290	1780 1880	6-77		40-800

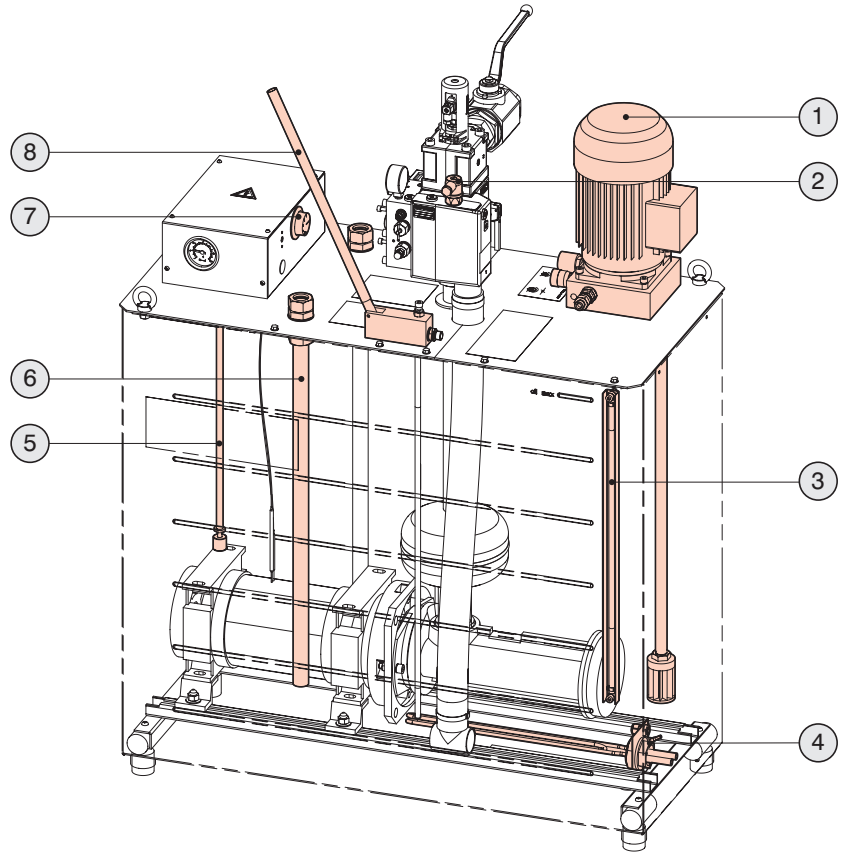
Saturn β

Optional accessories

Legend

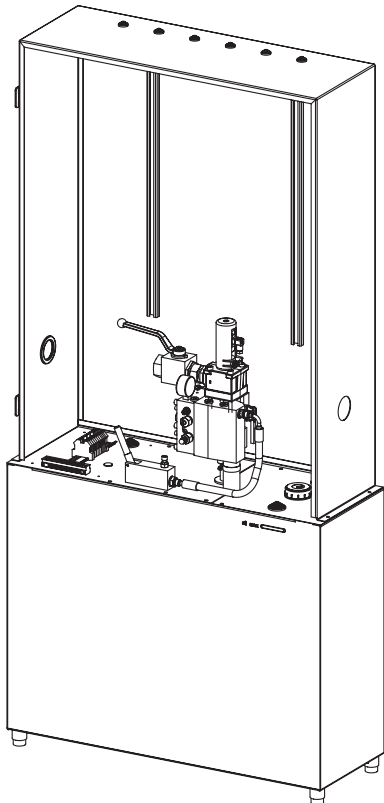
- 1 Releveling unit
- 2 Pressure switch
- 3 Oil level sight gauge
- 4 Tank heater
- 5 Oil level float switch
- 6 Cooler connections
- 7 Thermostat
- 8 Hand pump

Additional accessories on request,
i.e. Softstarter

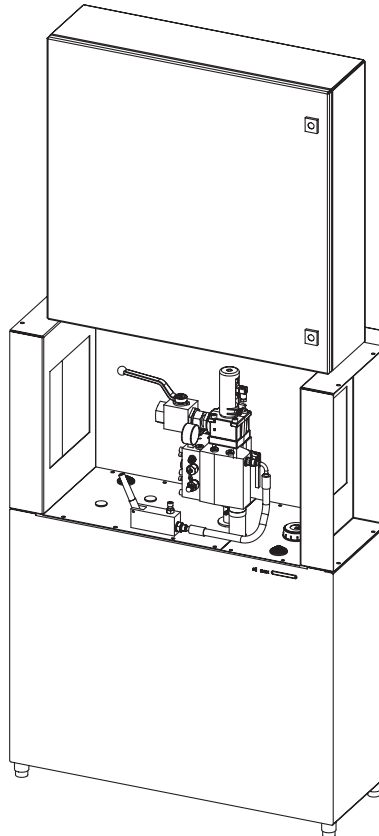


Example of use

UDA 150 with control cabinet



UDA 150 with assembling cabinet



Machine room cabinet

