



Unbiased Unbranded **Reliable**



BLAIN PRODUCTS AVAILABLE FROM HYDRATEC

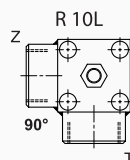
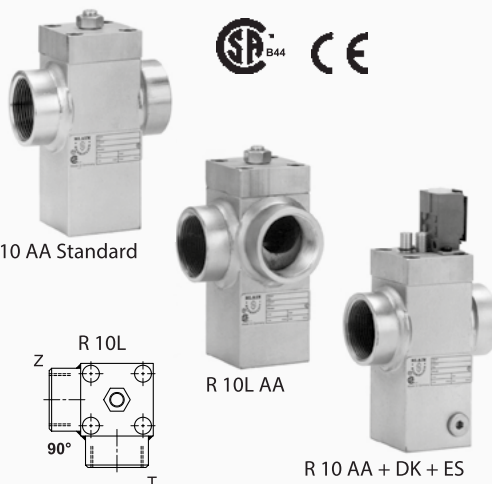
R10 RUPTURE VALVE

**BLAIN PRODUCTS
AVAILABLE FROM STOCK
AND TO ORDER**

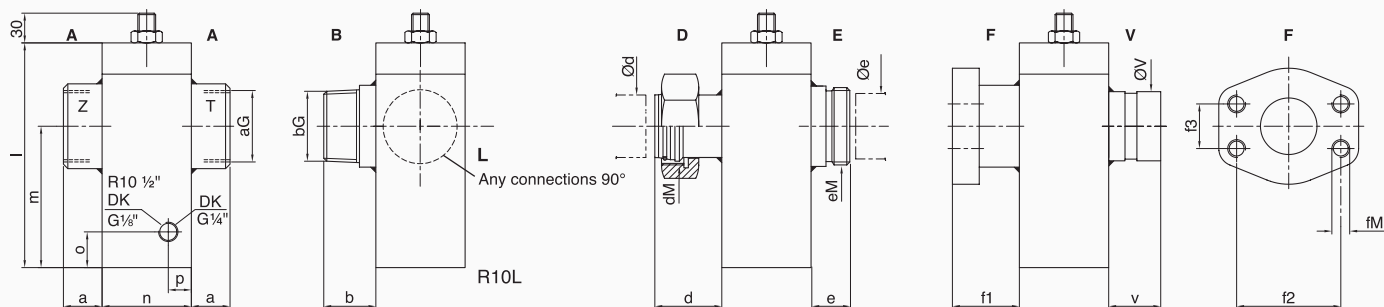
BLAIN R10 Rupture Valve

The rupture valve R 10 can be mounted in any position directly onto the cylinder inlet connection Z.

In the event of failure in the main cylinder line or where the down speed exceeds allowable limits, the R 10 valve closes, bringing the car to a smooth stop.



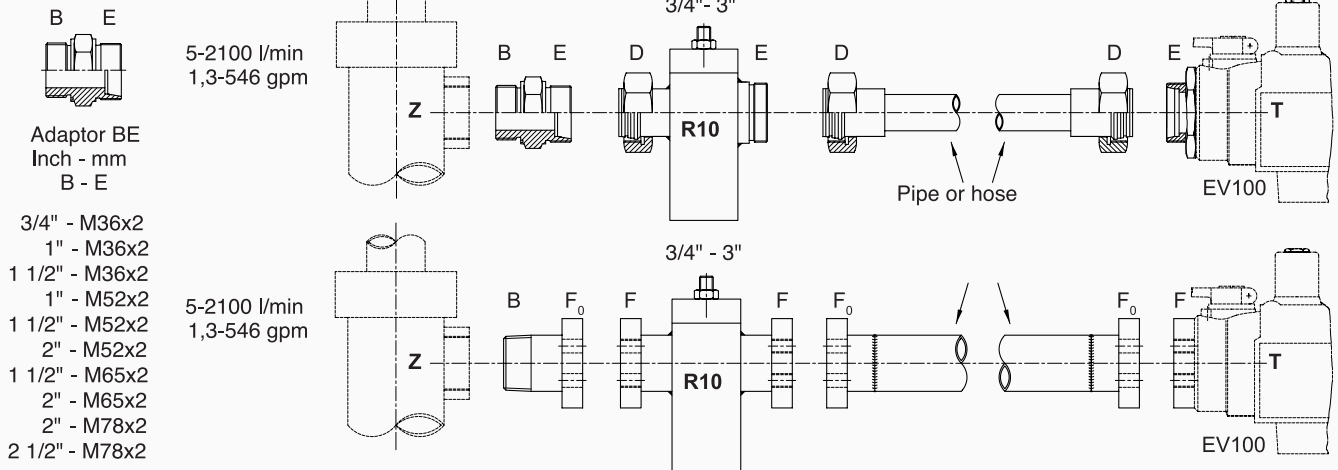
Alternative connections



Recommended size

R10 Qc		R10 P max.		A		B		L 90°		D		E		F SAE					V Victaulic		l	m	n	o	p	DK Tube	kg (AA)	
l/min.	US gpm	bar	psi	G o. NPT	a	G o. NPT	b	Optional	dM	Ød d	eM	Øe e	DN	fM	f1	f2	f3	Øv ⁱⁿ Øv	v ⁱⁿ v	mm	mm							
4 - 90	1,0 - 23	100	1500	½"	18																	88	53	40	9	11	6	0,9
5 - 100	1,3 - 26	100	1500	¾"	18	¾"	32		M 52 x 2	42 44	M 36 x 2	28 26	19	M 10	36	47,6	22,2	1,05 26,7	1,5 38			105	62	50	11	11	6	1,6
101 - 175	27 - 45	100	1500	1"	21	1"	32		M 52 x 2	42 44	M 36 x 2	28 26	25	M 10	38	52,4	26,2	1,31 33,4	1,5 38			105	62	50	11	11	6	1,6
176 - 425	46 - 110	100	1500	1½"	26	1½"	35		M 52 x 2	42 44	M 52 x 2	42 26	38	M 12	44	70	35,7	1,90 48,3	1,5 38			143	94	60	11	11	6	3,4
426 - 800	111 - 208	100	1500	2"	28	2"	38		M 65 x 2	56 44	M 65 x 2	56 40	51	M 12	45	77,8	42,9	2,37 60,3	1,5 38			167	108	80	20	17	8	7
801 - 1225	209 - 318	80	1200	2½"	30	2½"	45		M 78 x 2	63 50	M 78 x 2	63 40	64	M 12	50	89	50,8	2,87 73,0	1,5 38			196	121	100	19	18	8	13
1226 - 2100	319 - 546	60	900	3"	34	3"	45		M 78 x 2	63 50	M 78 x 2	63 40	76	M 16	50	106,4	62	3,50 88,9	1,5 38			240	149	120	22	21	10	21

Examples:





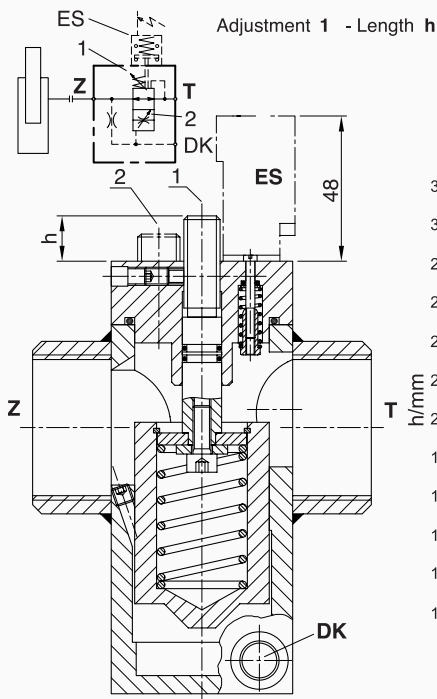
Warning: Only qualified personell should service hydraulic valves. Unauthorised manipulation may result in injury or damage to equipment. Prior to servicing internal parts, ensure that the electrical power is switched off and residual pressure in the system is reduced to zero.

Options

2 Through adjustment '2' the R 10 can be preset to lower the car to the bottom floor after it has been slowed down by the closing of the R 10, to allow the escape of passengers.

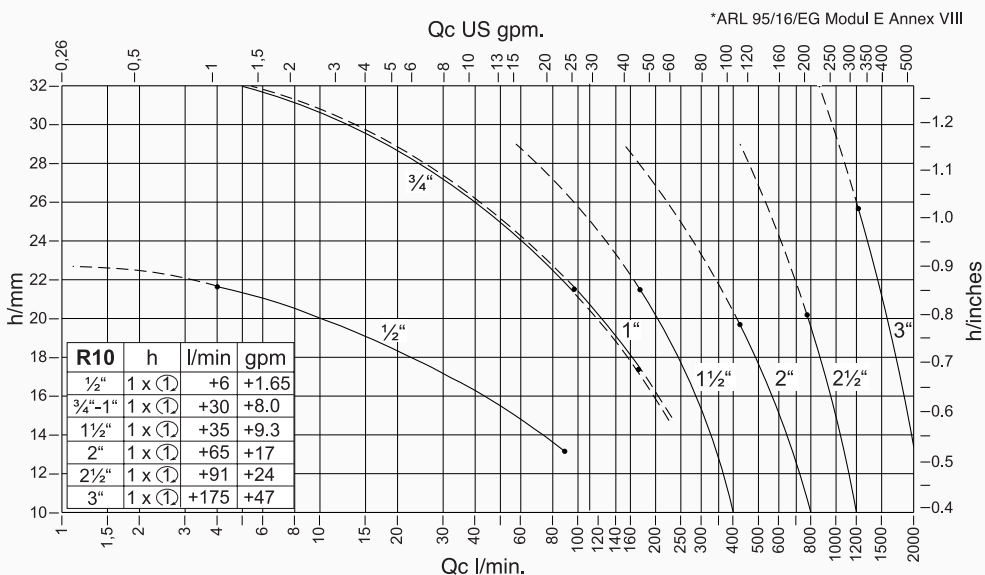
DK For twin cylinder systems the connecting of pilot ports 'DK' ensures that both R 10 valves close almost simultaneously. See in table 'DK Tube' on first page.

ES The rupture valve can be fitted with an electrical limit switch **ES** which is actuated when the valve closes and serves to initiate a warning signal or to shut down the elevator.



ES
Insul. P 65
380 V max.
6 A 100%

Range	
---	Adjustable
—	Permitted*



Hydratec Lift Services Limited
Unit 1B, Blackbushe Business Village
Yateley, Hampshire
GU46 6GA

t · +44 (0) 1252 871664
f · +44 (0) 1252 873601
e · sales.south@hydratec-lifts.co.uk

Hydratec Lift Services Limited
Unit A5, Axis Point Hareshill Business Park
Hill Top Road, Heywood
OL10 2RQ

t · +44 (0) 1252 871664
f · +44 (0) 1252 873601
e · sales.north@hydratec-lifts.co.uk

© Copyright 2015, Hydratec Lift Services Limited, All rights reserved.

*The technical and performance details contained within this document have been obtained from original manufacturers' product descriptions. Hydratec Lift Services Ltd are providing this information as a guide only and cannot be held responsible should any performance promises or technical details be incorrect.

we service your clients as you