



Unbiased Unbranded **Reliable**



BLAIN PRODUCTS AVAILABLE FROM HYDRATEC

RSL ELEVATOR RUPTURE VALVE

**BLAIN PRODUCTS
AVAILABLE FROM STOCK
AND TO ORDER**

BLAIN RSL Elevator Rupture Valve

The rupture valve RSL can be mounted in any position onto the cylinder inlet connection Z.

In the event of failure in the main cylinder line or where the down speed exceeds allowable limits, the RSL valve closes, bringing the car to a smooth stop.

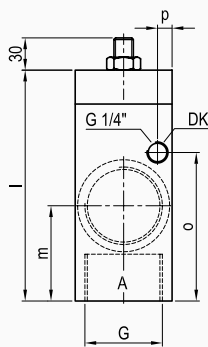
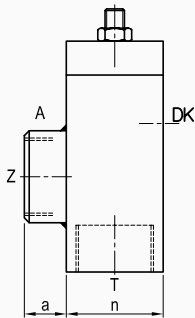


RSLAA

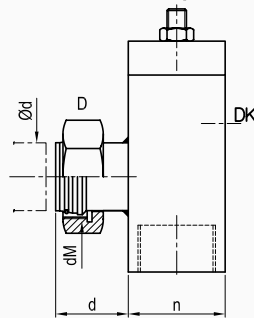


RSL DA

A Standard



D Option

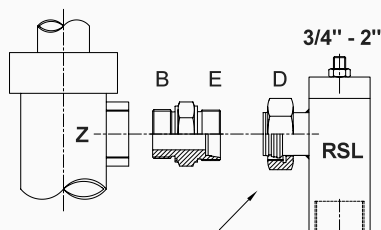


Other options same as R10
Weitere Optionen wie beim R10
Autres options comme par la R10
Otras opciones como en la R10

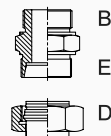
Adaptor

B - E

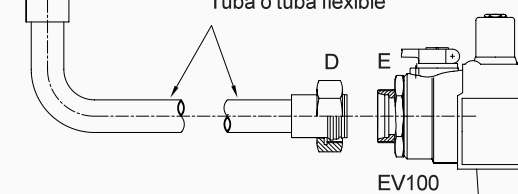
- 3/4" - M36x2
- 1" - M36x2
- 1 1/2" - M36x2
- 1" - M52x2
- 1 1/2" - M52x2
- 1 1/2" - M65x2
- 2" - M52x2
- 2" - M65x2
- 2" - M78x2



Example:
Connection D



Pipe or hose
Rohr oder Schlauch
Tube ou tube flexible
Tuba o tuba flexible



RSL Qc		RSL P max.		A		D		l	m	n	o	p	DK Tube di	kg (AA)
l/min.	US gpm	bar	psi	g	a	dM	Ød _d							
5 - 100	1,3 - 26	100	1500	3/4"	18	M 52 x 2	42/44	115	52	50	65	8	6	1,6
101 - 175	27 - 45	100	1500	1"	21	M 52 x 2	42/44	115	52	50	65	8	6	1,6
176 - 425	46 - 110	100	1500	1 1/2"	26	M 52 x 2	42/44	143	59	60	92	9	6	3,4
426 - 800	111 - 208	100	1500	2"	28	M 65 x 2	56/44	174	65	80	108	11	8	8,1



Warning: Only qualified personell should service hydraulic valves.
Unauthorised manipulation may result in injury or damage to equipment.
Prior to servicing internal parts, ensure that the electrical power is switched off and residual pressure in the system is reduced to zero.

Options

DK For twin cylinder systems the connecting of pilot ports 'DK' ensures that both RSL valves close almost simultaneously. See in table 'DK Tube' on first page.

Adjustment

1 'Closing flow' **Qc**. By screwing inwards, the valve closes with decreased oil flow.

Deceleration is less than 1 g and for safety reasons is a non adjustable, built in feature of the RSL valve.

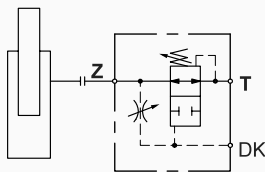
The rupture valve reopens through an 'Up' command.

Testing

The RSL must be tested without load to ensure closing of the valve between nominal and 0,3 m/sec (60 fpm) above nominal down speed of the car.

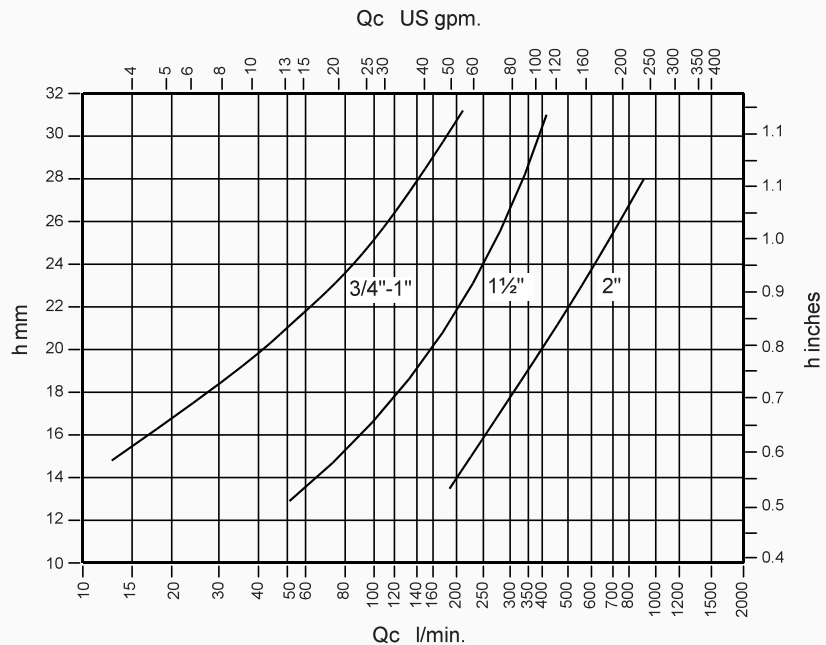
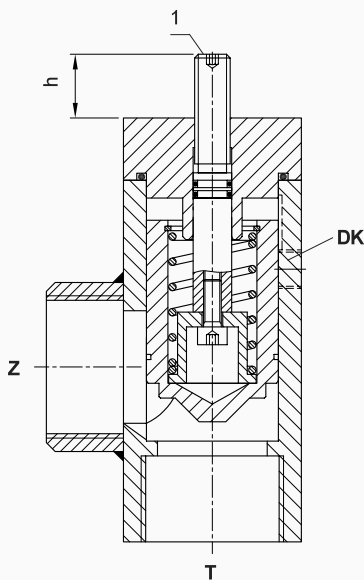
When the down flow is approximately equal to the adjusted closing flow, the RSL will take several seconds to close.

When the down flow is in great excess of the adjusted closing flow, the R 10 will close in 1-2 seconds.



- Adjustment 1 - Length h
- Einstellung 1 - Länge h
- Réglage 1 - Loungueur h
- Regulador 1 - Longitud h

RSL	h	l/min	gpm
3/4"-1"	1x $\langle 1 \rangle$	+ 20	+ 5,3
1 1/2"	1x $\langle 1 \rangle$	+ 37	+ 10,0
2"	1x $\langle 1 \rangle$	+ 70	+ 17,5





Hydratec Lift Services Limited
Unit 1B, Blackbushe Business Village
Yateley, Hampshire
GU46 6GA

t · +44 (0) 1252 871664
f · +44 (0) 1252 873601
e · sales.south@hydratec-lifts.co.uk

Hydratec Lift Services Limited
Unit A5, Axis Point Hareshill Business Park
Hill Top Road, Heywood
OL10 2RQ

t · +44 (0) 1252 871664
f · +44 (0) 1252 873601
e · sales.north@hydratec-lifts.co.uk

© Copyright 2015, Hydratec Lift Services Limited,
All rights reserved.

*The technical and performance details contained within this document have been obtained from original manufacturers' product descriptions. Hydratec Lift Services Ltd are providing this information as a guide only and cannot be held responsible should any performance promises or technical details be incorrect.

we service your clients as you