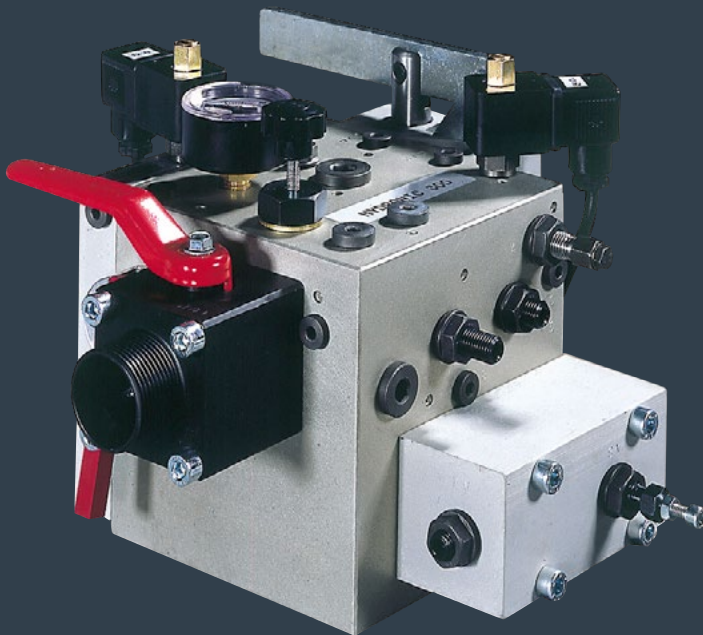




HYDRONIC PRODUCTS AVAILABLE FROM HYDRATEC

HYDRONIC ESC HYDRAULIC LIFT SYSTEM WITH VVVF VALVE



*12 months
on-site warranty*

All our work comes with the assurance that any callbacks are covered including parts and labour



Our engineers are certified First Aiders so can even work when the site First Aider is absent

Italian manufacturer Hydronic Lift SPA supplies a range of lift equipment for hydraulic driven lifts. As a specialist hydraulic lift contractor, Hydratec have been successfully specifying and installing Hydronic equipment to many of our established UK customers for some time.

With the drive towards energy efficient hydraulic systems, Hydronic introduced a system using their ESC (Energy Saving Concept) Inverter, which significantly reduces energy consumption by 25-30% in most cases. ESC increases the efficiency of the hydraulic system. The new VVVF valve (design, unique to Hydronic) was specially developed for the ESC system designed to reduce the power unit's hydraulic losses of up to 60%, thus reducing the motor power required to the motion of 1.5-2 kW resulting in lower oil temperatures.

FEATURES/BENEFITS*

- Up to 45% energy saving
- Cooling requirement significantly reduced
- Improved floor levelling
- Lower noise levels
- Smoother ride quality
- Easily converts existing system into VVVF
- No additional wiring in the controller is required

**REQUIRED POWER:
STANDARD POWER UNIT VS VVVF POWER UNIT
(ITALIAN ENEL)***

- Current values in the table are for 400V 50Hz
- Power required, (as written in CIP 36/79 - Letter DDC 1927 del 15/07/1982 - VDC-CU 1743 del 21/09/1989 - VDC-CU 1473 del 26/04/1994 and updating of 30/12/1998 SEZ. LL 04.02.00) is calculated as max between:

- (1) $P=1.73*400*I_{start}/2*0.9$ and
 (2) $P=1.73*400*I_n*0.9$ and then rounded to the next commercially available Mains size



MOTOR DATASHEET				STANDARD DIRECT STARTING	WITH SOFT STARTER	WITH INVERTER		
NOMINAL MOTOR OUTPUT [kW]	POWER FACTOR COSΦ	NOMINAL CURRENT [A]	STARTING CURRENT [A] [kW]	MAINS SIZE REQUIRED (1) [kW]	MAINS SIZE REQUIRED (2) [kW]	NOMINAL CURRENT / STARTING CURRENT [A]	MAINS SIZE REQUIRED (2) (WITHOUT LIM.) [kW]	MAINS SIZE REQUIRED (2) (WITH LIM.) [kW]
6,00	0,77	14,5	47	15	10	12	10	6
7,70	0,84	17,5	54	20	15	15,5	10	6
8,50	0,82	20	64	20	15	17	15	10
9,50	0,85	21,8	76	25	15	19,5	15	10
12,00	0,86	26,5	88	30	20	24	15	10
16,00	0,86	34	122	40	25	30,5	20	15
20,00	0,89	42	153	50	30	39	35	20

See below*



Hydratec Lift Services Limited
 Unit 1B, Blackbushe Business Village
 Yateley, Hampshire
 GU46 6GA

t · +44 (0) 1252 871664
 f · +44 (0) 1252 873601
 e · sales.south@hydratec-lifts.co.uk

Hydratec Lift Services Limited
 Unit A5, Axis Point Hareshill Business Park
 Hill Top Road, Heywood
 OL10 2RQ

t · +44 (0) 1252 871664
 f · +44 (0) 1252 873601
 e · sales.north@hydratec-lifts.co.uk

© Copyright 2015, Hydratec Lift Services Limited, All rights reserved.

*The technical and performance details contained within this document have been obtained from original manufacturers' product descriptions. Hydratec Lift Services Ltd are providing this information as a guide only and cannot be held responsible should any performance promises or technical details be incorrect.

we service your clients as you