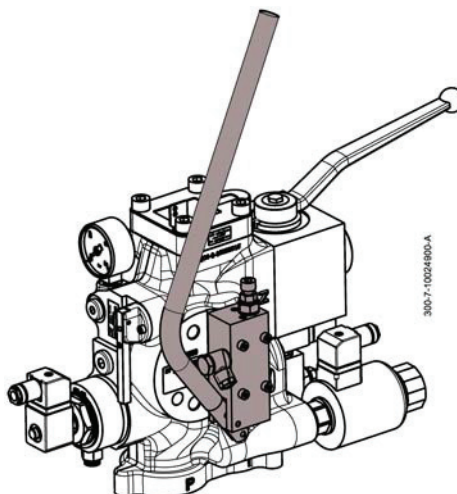


## VF-iValve – VF-i500

In the VF-iValve i500, the hand pump and emergency-lowering facility are separated. The car can be moved upward with the hand pump when needed, and downward by means of the emergency-lowering facility.

### Hand pump



### Emergency lowering



#### **DANGER!**

Car descent

Can lead to death or serious injuries.

Before operating the emergency-lowering valve, make sure that there are no people or materials in the lift shaft.

The car is lowered by pressing the lever of the emergency-lowering valve.

**Note:** The minimum preload pressure of 6 bar remains (prevents slack-rope build-up as per EN 81-2, sect. 12.9.1.5).

### Temporary deactivation of preload pressure

For the purpose of checks or maintenance the preload pressure can be temporarily deactivated.

If no other M3-screw is ready to hand:

1. Remove the fastening screw from a solenoid plug
2. Screw the M3-screw into the opening (1) of the lever of the emergency-lowering valve

In order to deactivate the preload pressure:

3. Pull the M3-screw and simultaneously press the lever of the emergency-lowering valve
4. Undo the M3-screw from the lever of the emergency lowering

If the M3-screw had been undone from the solenoid plug:

5. Screw the M3-screw back into the solenoid plug

